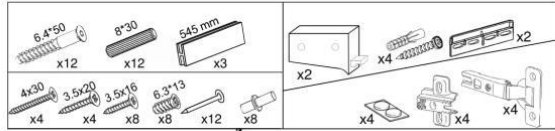
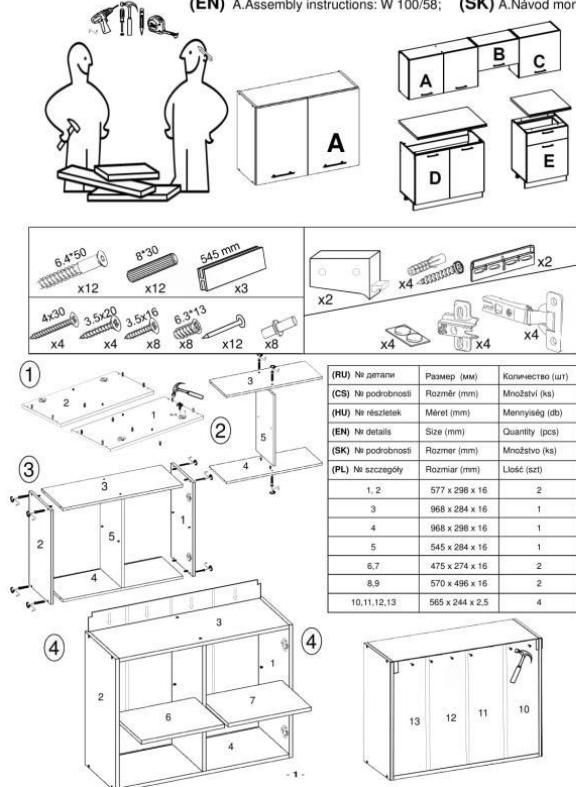
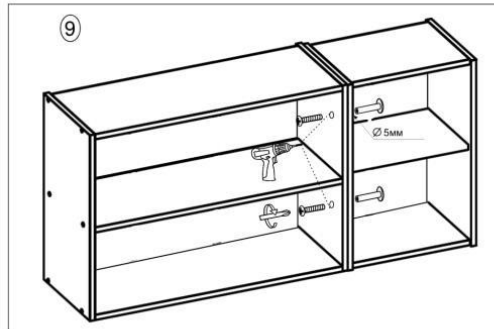
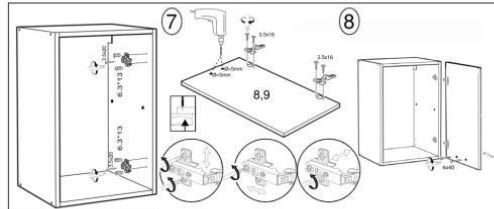
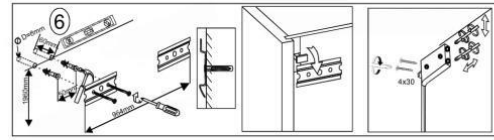


BRIGGITE SMART 2.2m

(RU) A.Инструкция по сборке:W 100/58; (CS) A.Návod montáž: W 100/58; (HU) A. Szerelési útmutató: A 100/58;
(EN) A.Assembly instructions: W 100/58; (SK) A.Návod montáž: W 100/58; (PL) A.Instrukcja montaż: W 100/58;

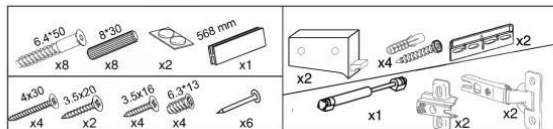
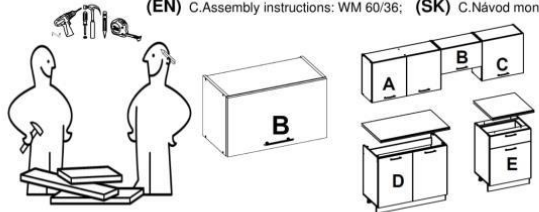


| (RU) № детали | Размер (мм) | Количество (шт) |
|--------------------|-----------------|-----------------|
| (CS) № podrobnosti | Rozměr (mm) | Množství (ks) |
| (HU) № részletek | Méret (mm) | Mennyiség (db) |
| (EN) № details | Size (mm) | Quantity (pcs) |
| (SK) № podrobnosti | Rozmiar (mm) | Množstvo (ks) |
| (PL) № szczegóły | Rozmiar (mm) | Ilość (szt) |
| 1, 2 | 577 x 298 x 16 | 2 |
| 3 | 968 x 284 x 16 | 1 |
| 4 | 968 x 298 x 16 | 1 |
| 5 | 545 x 284 x 16 | 1 |
| 6, 7 | 475 x 274 x 16 | 2 |
| 8, 9 | 570 x 496 x 16 | 2 |
| 10, 11, 12, 13 | 565 x 244 x 2,5 | 4 |

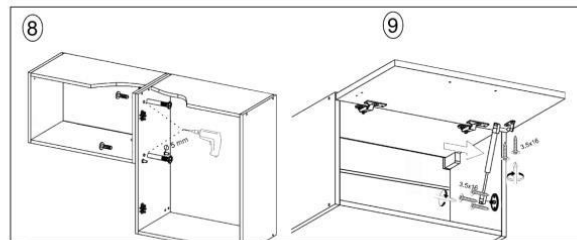
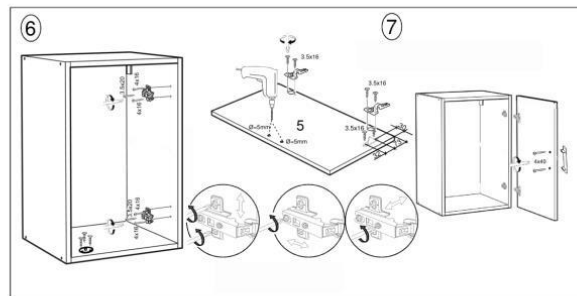
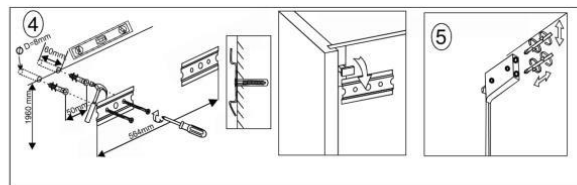
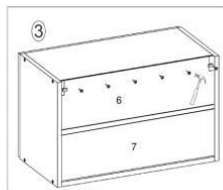
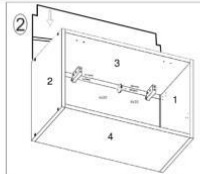
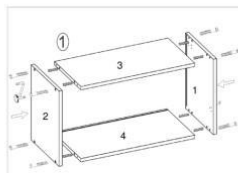


BRIGGITE SMART 2.2m

(RU) C.Инструкция по сборке:WM 60/36; (CS) C.Návod montáž: WM 60/36; (HU) C. Szerelési útmutató: AM 60/36;
(EN) C.Assembly instructions: WM 60/36; (SK) C.Návod montáž: WM 60/36; (PL) C.Instrukcja montaż: WM 60/36;

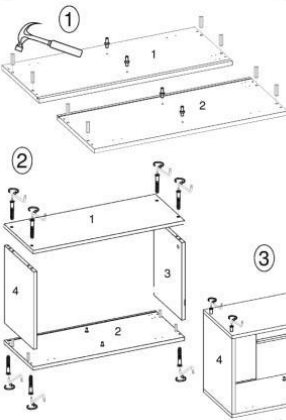
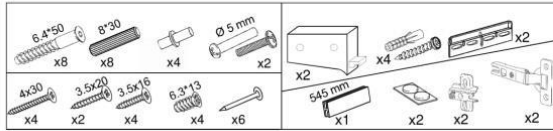
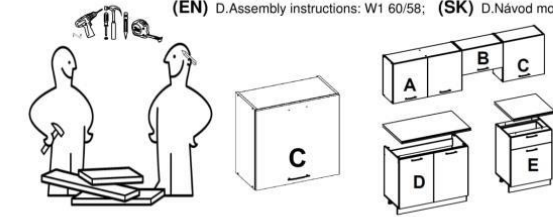


| (RU) № детали | Размер (мм) | Количество (шт) |
|--------------------|-----------------|-----------------|
| (CS) № podrobnosti | Rozměr (mm) | Množství (ks) |
| (HU) № részletek | Méret (mm) | Mennyiség (db) |
| (EN) № details | Size (mm) | Quantity (pcs) |
| (SK) № podrobnosti | Rozmiar (mm) | Množstvo (ks) |
| (PL) № szczegóły | Rozmiar (mm) | Ilość (szt) |
| 1, 2 | 360 x 298 x 16 | 2 |
| 3 | 568 x 284 x 16 | 1 |
| 4 | 568 x 298 x 16 | 1 |
| 5 | 355x 596 x 16 | 1 |
| 6, 7 | 173 x 578 x 2,5 | 2 |

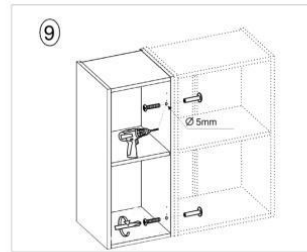
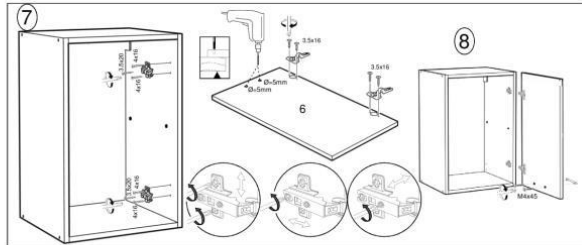
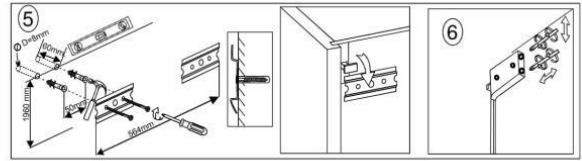


BRIGGITE SMART 2.2m

(RU) D.Инструкция по сборке:В1 60/58; (CS) D.Návod montáž: W1 60/58; (HU) D. Szerelési útmutató: A1 60/58;
 (EN) D.Assembly instructions: W1 60/58; (SK) D.Návod montáž: W1 60/58; (PL) D.Instrukcja montaż: W1 60/58;

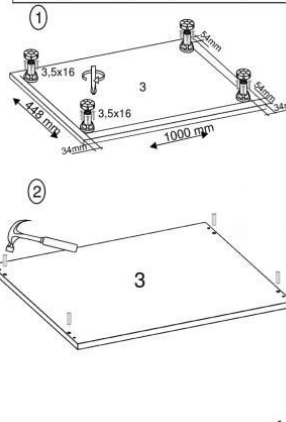
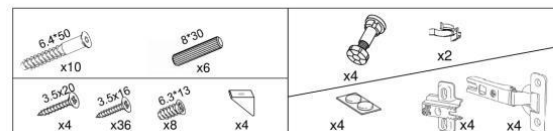
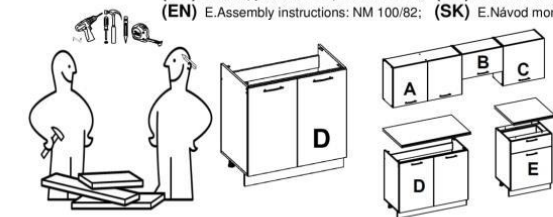


| (RU) № детали | Размер (мм) | Количество (шт) |
|--------------------|-----------------|-----------------|
| (CS) № podrobnosti | Rozměr (mm) | Množství (ks) |
| (HU) № részletek | Méret (mm) | Mennyiség (db) |
| (EN) № details | Size (mm) | Quantity (pcs) |
| (SK) № podrobnosti | Rozmer (mm) | Množstvo (ks) |
| (PL) № szczegóły | Rozmiar (mm) | Ilość (szt) |
| 1, 2 | 577 x 298 x 16 | 2 |
| 3 | 568 x 298 x 16 | 1 |
| 4 | 568 x 284 x 16 | 1 |
| 5 | 567 x 274 x 16 | 1 |
| 6 | 570 x 596 x 16 | 1 |
| 7, 8 | 565 x 288 x 2.5 | 2 |

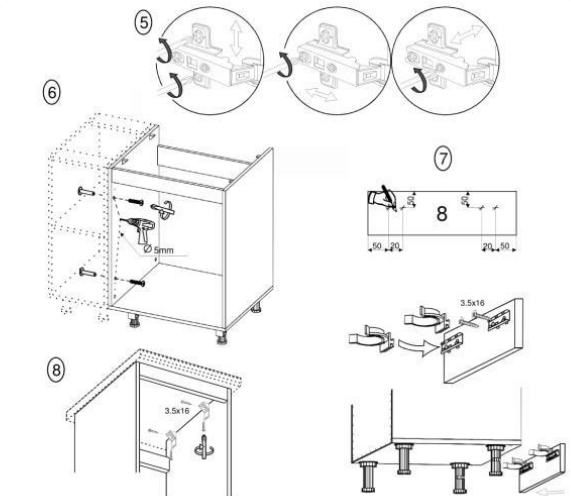
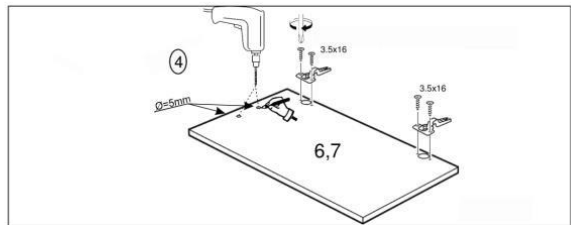


BRIGGITE SMART 2.2m

(RU) E.Инструкция по сборке:NM 100/82; (CS) E.Návod montáž: NM 100/82; (HU) E. Szerelési útmutató: DZ 100/82;
 (EN) E.Assembly instructions: NM 100/82; (SK) E.Návod montáž: NM 100/82; (PL) E.Instrukcja montaż: NM 100/82;

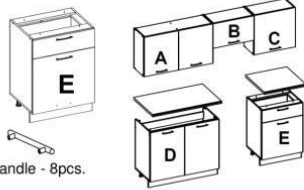
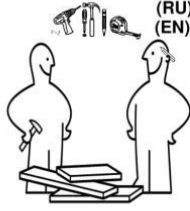


| (RU) № детали | Размер (мм) | Количество (шт) |
|--------------------|-----------------|-----------------|
| (CS) № podrobnosti | Rozměr (mm) | Množství (ks) |
| (HU) № részletek | Méret (mm) | Mennyiség (db) |
| (EN) № details | Size (mm) | Quantity (pcs) |
| (SK) № podrobnosti | Rozmer (mm) | Množstvo (ks) |
| (PL) № szczegóły | Rozmiar (mm) | Ilość (szt) |
| 1, 2 | 704 x 448 x 16 | 2 |
| 3 | 1000 x 448 x 16 | 1 |
| 4 | 968 x 70 x 16 | 1 |
| 5 | 968 x 97 x 16 | 1 |
| 6, 7 | 496 x 713 x 16 | 2 |
| 8 | 1000 x 97 x 16 | 1 |

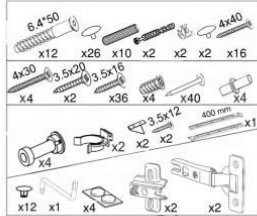


BRIGGITE SMART 2.2m

(RU) F.Инструкция по сборке:NB 60/82(1+1); (CS) F.Návod montáž: NB 60/82(1+1); (HU) F. Szerelési útmutató: D 60/82(1+1);
 (EN) F.Assembly instructions: NB 60/82(1+1); (SK) F.Návod montáž: NB 60/82(1+1); (PL) F.Instrukcja montaż: NB 60/82(1+1);



Handle - 8pcs.



| (RU) № детали | Размер (мм) | Количество (шт) |
|--------------------|-----------------|-----------------|
| (CS) № podrobnosti | Rozměr (mm) | Množství (ks) |
| (HU) № részletek | Méret (mm) | Mennyiség (db) |
| (EN) № details | Size (mm) | Quantity (pcs) |
| (SK) № podrobnosti | Rozmiar (mm) | Množstvo (ks) |
| (PL) № szczegóły | Rozmiar (mm) | Liczba (szt) |
| 1, 2 | 704 x 448 x 16 | 2 |
| 3 | 600 x 448 x 16 | 1 |
| 4, 5 | 568 x 96 x 16 | 2 |
| 6 | 567 x 458 x 16 | 1 |
| 7 | 596 x 533 x 16 | 1 |
| 8 | 596 x 176 x 16 | 1 |
| 9 | 96 x 511 x 16 | 1 |
| 10,11 | 96 x 400 x 16 | 2 |
| 12 | 405 x 541 x 2,5 | 1 |
| 13,14 | 718 x 298 x 2,5 | 2 |
| 15 | 600 x 97 x 16 | 1 |

